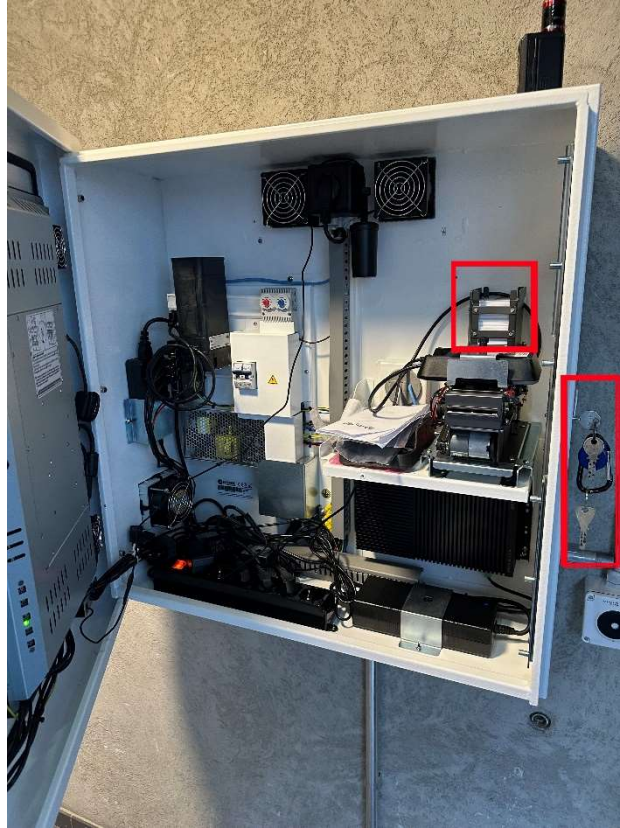
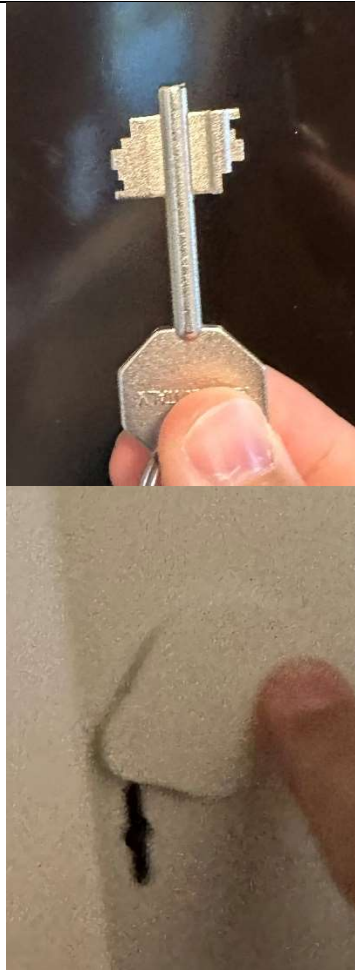


KIOSK



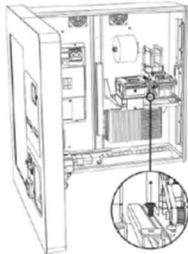
TAKE THE "KIOSK" KEY, OPEN THE KIOSK AND FILL THE CARDS STOCK.

WHEN CLOSING THE KIOSK, YOU NEED TO LIFT THE DOOR A LITTLE SO THAT IT IS SECURELY CLOSED.



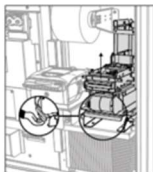
8.3 CARD DISPENSER

The card dispenser distributes cards that need to be periodically refilled. Furthermore the discarded cards drawer must be emptied every time it fills up. In order to carry out these activities, follow the following steps:

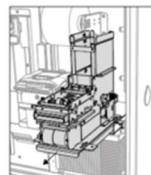


1. Open the kiosk with the key on the right side. Remove the safety screw of the slider of the card dispenser using the provided imbus tool.

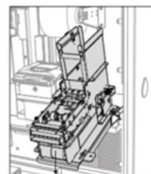
N.B. Once the kiosk is attached to the wall it is not necessary to reinsert the safety screw on the rail of the card dispenser. It must be used only for transportation.



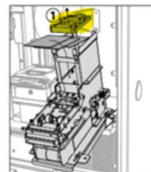
2. Grab the card dispenser support handle with one hand and lift it enough so it can pass the block of end position (limit switch).



3. Slide the card dispenser forward to the end of the track.



4. Gently leave the card dispenser downwards like shown in the picture



5. Remove the weight (1) inside. Refill the cards and then reposition the weight.